

An extended three bedroom semi-detached house, providing spacious and flexible accommodation. Internally the attractive accommodation on the ground floor includes an entrance porch, hall with staircase to the first floor, a superb lounge, a generous fitted dining kitchen and a double bedroom with en-suite wet room/wc. On the first floor there are two further double bedrooms and a bathroom/wc. Externally there is a low maintenance garden to the front and a delightful garden to the rear with a lawn, patio area and planted borders. This convenient location is close to local amenities, shops and schools as well as offering transport links to surrounding areas. With no upper chain involved, we highly advise early viewing.

MAIN ROOMS AND DIMENSIONS

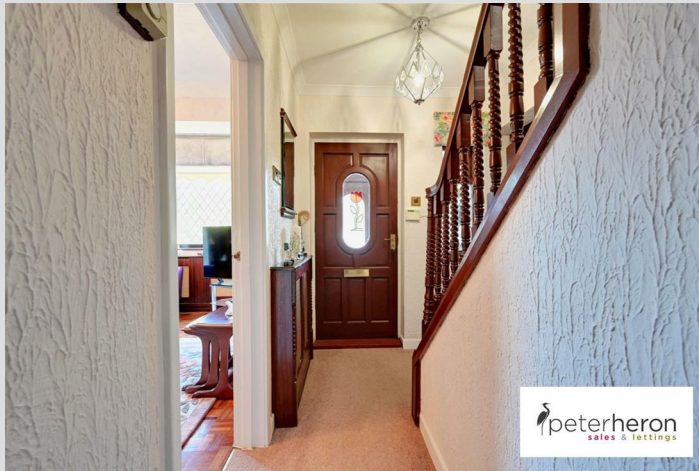
Ground Floor

Access via UPVC double glazed entrance door.

Entrance Porch

UPVC double glazed window and inner door leading through to hall.

Hall



Radiator and staircase to first floor.

Lounge 17'4" x 11'6" into alcove



UPVC double glazed window to front, radiator and feature fireplace.

Dining Kitchen 23'6" x 9'7" narrowing to 6'2"



Fitted with a range of modern wall and base units with work surfaces over incorporating 1 1/2 bowl sink and drainer unit, space for cooker, fridge freezer and washing machine, radiator, UPVC double galzed window to rear and timber framed double glazed sealed unit window to rear. UPVC double glazed door to rear garden and built in cupboard.

Bedroom 1 12'6" x 10'4" plus 7'10" x 6'0"



UPVC double glazed French door to front, UPVC double glazed window to front, 2x radiators, sliding door to en-suite.

En-Suite Wet Room



Low level WC, washbasin set into vanity unit and wet area with electric shower, chrome ladder style radiator and extractor fan.

First Floor Landing

Timber framed double glazed sealed unit window to side, radiator and access point to loft.

Bedroom 2 12'10" not including robes x 11'3"



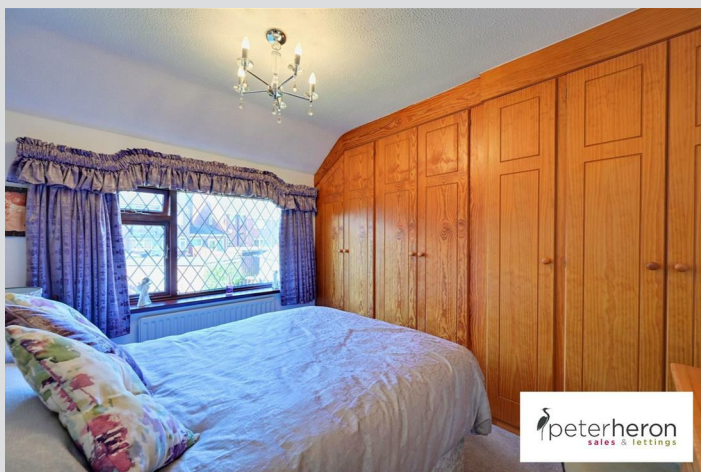
UPVC double glazed window to front, radiator, fitted wardrobes and built in walk in cupboard which houses the central heating boiler and UPVC double glazed window.

Visit www.peterheron.co.uk or call 0191 510 3323

Tried. Trusted. Recommended. City Branch 20 Fawcett Street Sunderland SR1 1RH Fulwell Branch 15 Sea Road Fulwell Sunderland SR6 9BS

MAIN ROOMS AND DIMENSIONS

Bedroom 3 10'7" x 8'2" not including robes



Timber framed double glazed sealed unit window to rear, radiator and fitted wardrobes.

Bathroom



Low level WC, pedestal washbasin and panel bath with shower attachment, 2x timber framed double glazed sealed unit windows, radiator and tiled walls.

Outside



Attractive low maintenance garden to the front and to the rear a delightful garden with a lawn, patio and planted borders.

Council Tax Band

The Council Tax Band is Band B.

Tenure Freehold

We are advised by the Vendors that the property is Freehold. Any prospective purchaser should clarify this with their Solicitor.

Important Notice - Particulars

Peter Heron Ltd for themselves and for the vendors of this property whose agents they are, give notice that:- The particulars are set out for general guidance only for the intending Purchasers and do not constitute part of an offer or contract. Whilst we endeavour to make our sales particulars accurate and reliable, if there is anything of particular importance which you feel may influence your decision to purchase, please contact the office and we will be pleased to check the information. Do so particularly, if contemplating travelling some distance to view the property. All descriptions, dimensions, references to conditions and necessary permissions for use and occupation and other details are given in good faith, and are believed to be correct, however any intending purchasers should not rely on them that statements are representations of fact, but must satisfy themselves by inspection or otherwise as to

the correctness of each of them. Independent property size verification is recommended.

Lease details, service charges and ground rent (where applicable) are given as a guide only and should be checked and confirmed by your Solicitor prior to exchange of contracts. No person in the employment of Peter Heron Ltd has any authority to make or give any representation or warranty whatever in relation to this property or these particulars, nor to enter into any contract on behalf of Peter Heron Ltd, nor into any contract on behalf of the Vendor. The copyright of all details and photographs remain exclusive to Peter Heron Ltd.

Please note that in the event the purchaser uses the services of Peter Heron Conveyancing in the purchase of their home, Peter Heron Ltd will be paid a completion commission of £300.00 by Movewithus Ltd.

Fawcett Street Viewings

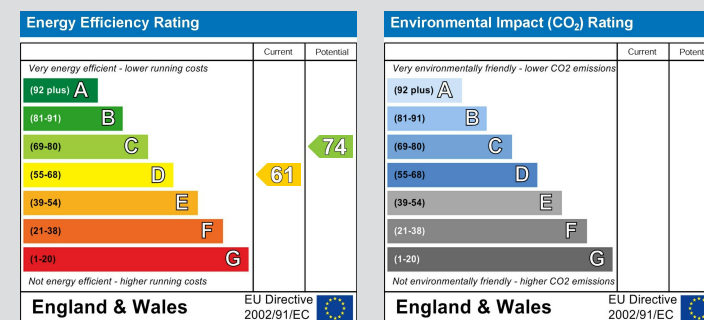
To arrange an appointment to view this property please contact our Fawcett Street branch on or book viewing online at peterheron.co.uk

Opening Times

Monday to Friday 9.00am - 5.00pm Saturday 9.00am - 12noon

Ombudsman

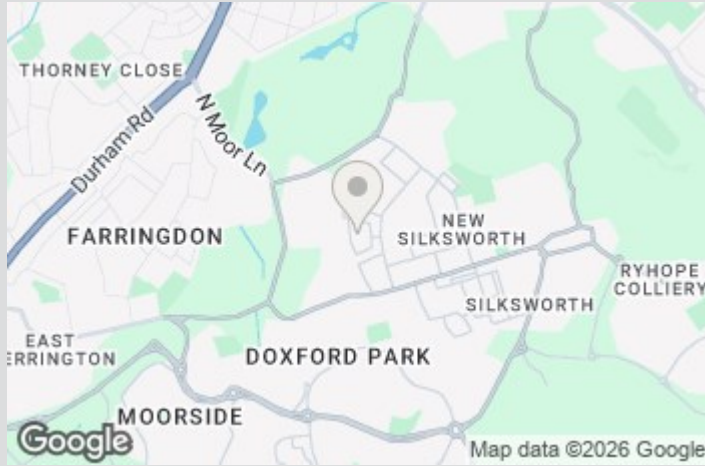
Peter Heron Estate Agents are members of The Property Ombudsman and subscribe to The Property Ombudsman Code of Practice.



Visit www.peterheron.co.uk or call 0191 510 3323

Tried. Trusted. Recommended. City Branch 20 Fawcett Street Sunderland SR1 1RH Fulwell Branch 15 Sea Road Fulwell Sunderland SR6 9BS

MAIN ROOMS AND DIMENSIONS

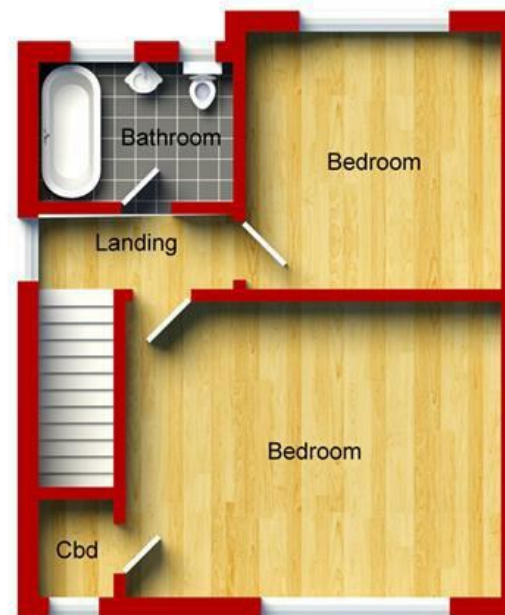


Visit www.peterheron.co.uk or call **0191 510 3323**

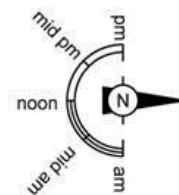
Tried. Trusted. Recommended. City Branch 20 Fawcett Street Sunderland SR1 1RH Fulwell Branch 15 Sea Road Fulwell Sunderland SR6 9BS



Ground Floor
Approximate Floor Area
(70.70 sq.m)



First Floor
Approximate Floor Area
(36.70 sq.m)



12 Crossways